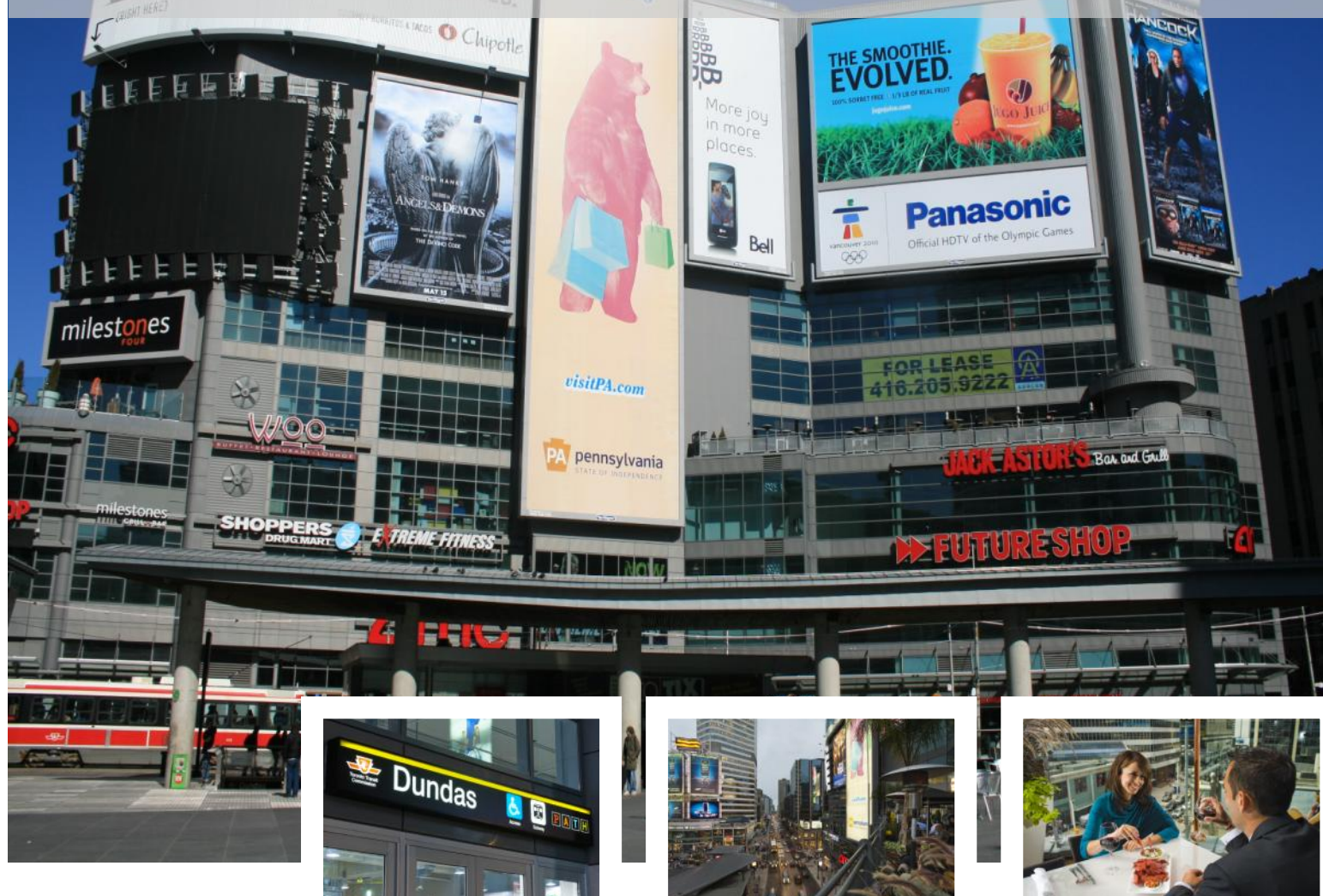


# 10 DUNDAS STREET EAST

Toronto, Ontario



## INFORMATION:

**AVAILABILITY:** ~~Suite 501, 6,400 rentable sq. ft.~~ **LEASED**  
Suite 702, 12,453 rentable sq. ft.  
Suite 1000, 4,083 rentable sq. ft.

**TERM:** 5-10 years

**RATES:** Negotiable

**T & O's:** \$18.36 PSF (Est. 2008)

Please call for information on Tenant Improvement Allowance

## COMMENTS:

- Located at exciting Yonge/Dundas Square
- Spectacular views of city skyline
- Direct access to TTC and PATH
- Onsite restaurants (Jack Astor's, Milestones, etc.), food court and retail
- NOTE: Suite 702 has triple height ceilings, but no windows



ASHLAR

a member of **NAI** Global

**ASHLAR URBAN REALTY INC.**  
Real Estate Brokerage

350 Bay Street, Suite 400  
Toronto, ON M5H 2S6  
T 416.205.9222 F 416.205.9228

[www.ashlarurban.com](http://www.ashlarurban.com)

**JEFF THOMAS**, Associate Vice President  
T 416.205.9222 ext 221  
[jthomas@ashlarurban.com](mailto:jthomas@ashlarurban.com)

**MICHAEL SCACE**, Associate Vice President  
T 416.205.9222 ext 222  
[mscace@ashlarurban.com](mailto:mscace@ashlarurban.com)

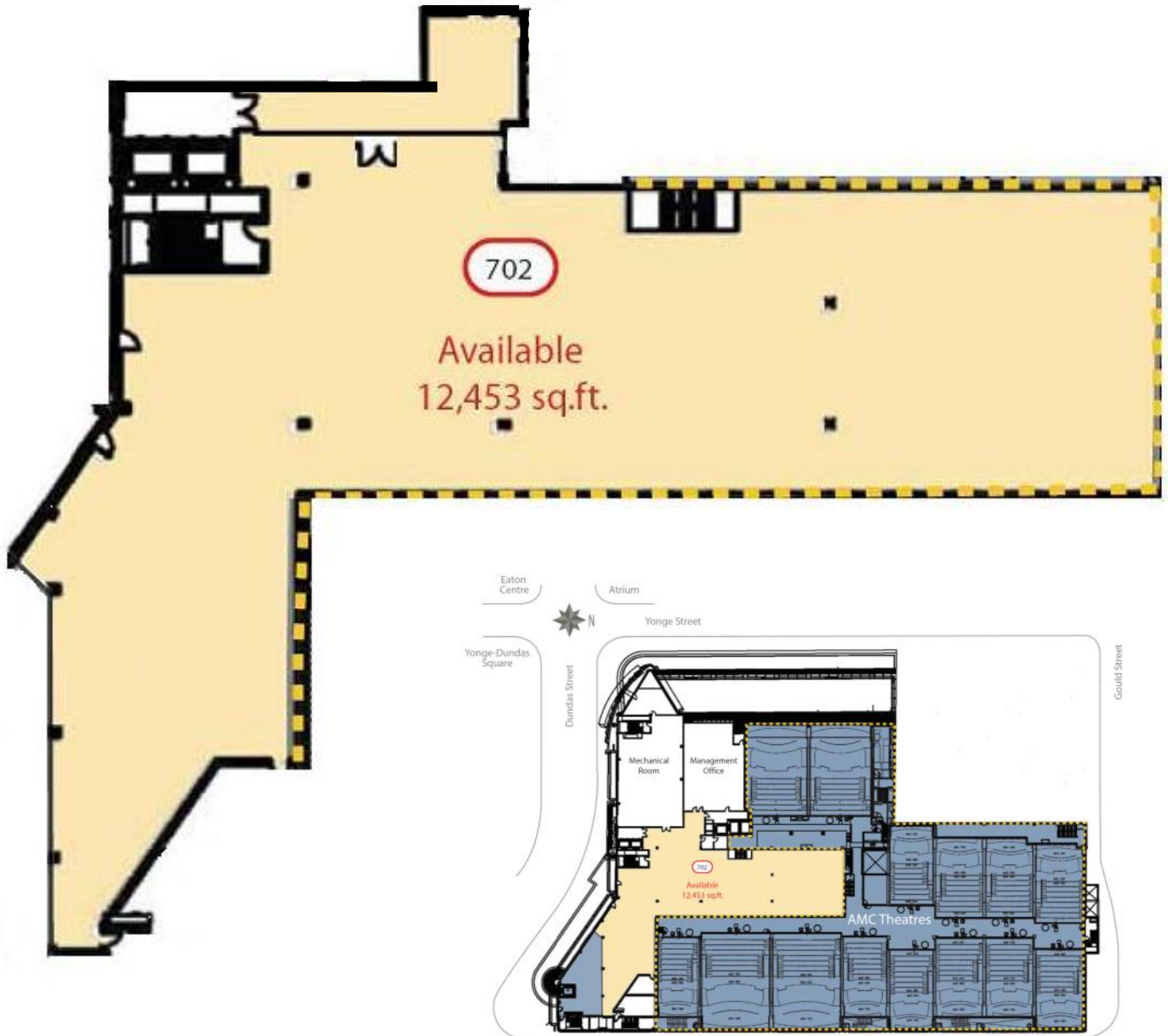
The statements contained in this document are based upon the information furnished by the principal and other sources, which we believe to be correct but can assume no responsibility for. This submission is made subject to prior sale, change in price or terms, or withdrawal without notice. Prospective purchasers or tenants should not construe this information as legal or tax advice. Legal counsel, accountants or other advisors should be consulted on matters related to this presentation. — Ashlar Urban Realty Inc.



# 10 DUNDAS STREET EAST

## Floor Plans

**LEVEL 7 - 12,453 SQUARE FEET**



**ASHLAR**

a member of **NAI Global**

**ASHLAR URBAN REALTY INC.**  
Real Estate Brokerage

350 Bay Street, Suite 400  
Toronto, ON M5H 2S6  
T 416.205.9222 F 416.205.9228

[www.ashlarurban.com](http://www.ashlarurban.com)

**JEFF THOMAS**, Associate Vice President  
T 416.205.9222 ext 221  
[jthomas@ashlarurban.com](mailto:jthomas@ashlarurban.com)

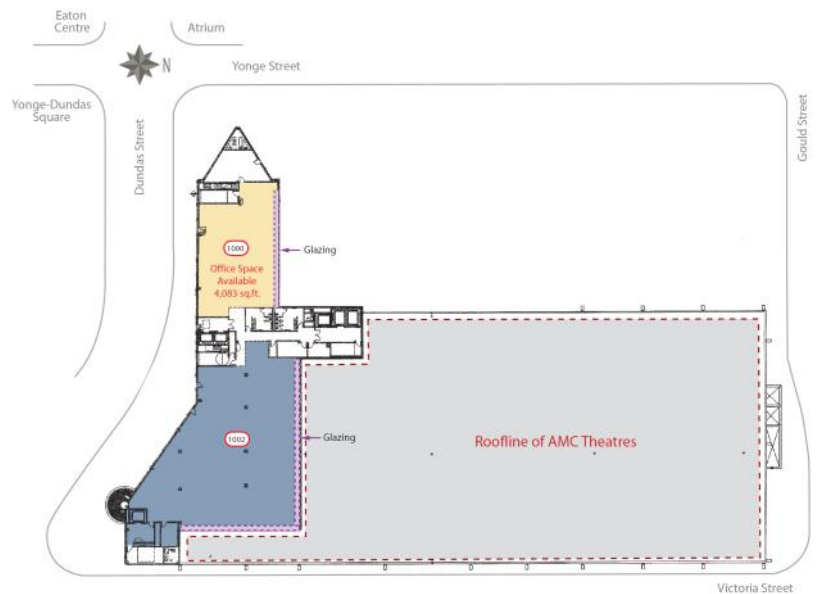
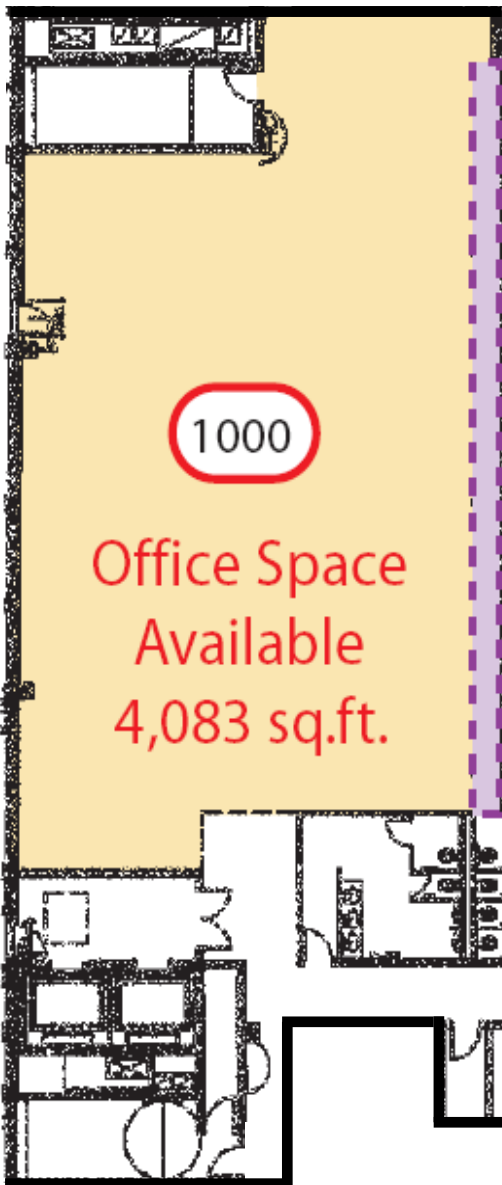
**MICHAEL SCACE**, Associate Vice President  
T 416.205.9222 ext 222  
[mscace@ashlarurban.com](mailto:mscace@ashlarurban.com)

The statements contained in this document are based upon the information furnished by the principal and other sources, which we believe to be correct but can assume no responsibility for. This submission is made subject to prior sale, change in price or terms, or withdrawal without notice. Prospective purchasers or tenants should not construe this information as legal or tax advice. Legal counsel, accountants or other advisors should be consulted on matters related to this presentation. — Ashlar Urban Realty Inc.

# 10 DUNDAS STREET EAST

## Floor Plans

**LEVEL 10 - 4,083 SQUARE FEET**



**ASHLAR**

a member of **NAI Global**

**ASHLAR URBAN REALTY INC.**  
Real Estate Brokerage

350 Bay Street, Suite 400  
Toronto, ON M5H 2S6  
T 416.205.9222 F 416.205.9228

[www.ashlarurban.com](http://www.ashlarurban.com)

**JEFF THOMAS**, Associate Vice President  
T 416.205.9222 ext 221  
[jthomas@ashlarurban.com](mailto:jthomas@ashlarurban.com)

**MICHAEL SCACE**, Associate Vice President  
T 416.205.9222 ext 222  
[mscace@ashlarurban.com](mailto:mscace@ashlarurban.com)

The statements contained in this document are based upon the information furnished by the principal and other sources, which we believe to be correct but can assume no responsibility for. This submission is made subject to prior sale, change in price or terms, or withdrawal without notice. Prospective purchasers or tenants should not construe this information as legal or tax advice. Legal counsel, accountants or other advisors should be consulted on matters related to this presentation. — Ashlar Urban Realty Inc.