



# 183 BATHURST STREET

Toronto, Ontario



**ASHLAR**

a member of **NAI** Global

**ASHLAR URBAN REALTY INC.**  
Real Estate Brokerage

350 Bay Street, Suite 400  
Toronto, ON M5H 2S6  
T 416.205.9222 F 416.205.9228

[www.ashlarurban.com](http://www.ashlarurban.com)

**JEFF THOMAS**, Associate Vice President  
T 416.205.9222 ext 221  
[jthomas@ashlarurban.com](mailto:jthomas@ashlarurban.com)

**MICHAEL SCACE**, Associate Vice President  
T 416.205.9222 ext 222  
[mscace@ashlarurban.com](mailto:mscace@ashlarurban.com)



The statements contained in this document are based upon the information furnished by the principal and other sources, which we believe to be correct but can assume no responsibility for. This submission is made subject to prior sale, change in price or terms, or withdrawal without notice. Prospective purchasers or tenants should not construe this information as legal or tax advice. Legal counsel, accountants or other advisors should be consulted on matters related to this presentation. — Ashlar Urban Realty Inc.



# 183 BATHURST STREET

## Toronto, Ontario

### DETAILS

#### Office Area

- Lower Level - 7,680 SF Immediately
- Suite 401 - 2,180 SF Immediately

Asking net rent \$19.00 PSF

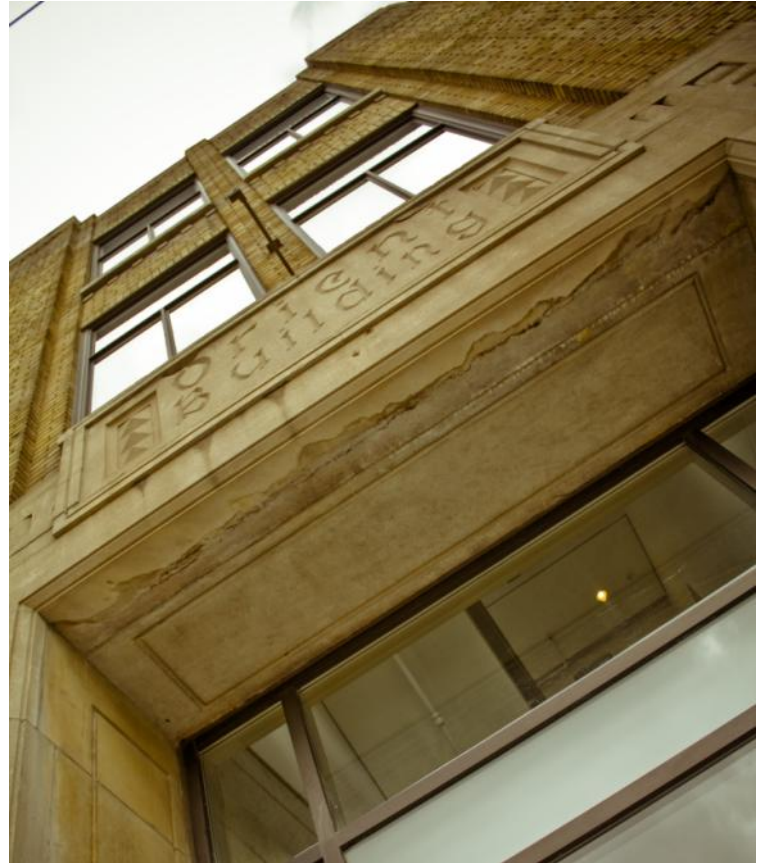
T & O's (Est. 2009) \$7.56 (Excludes Hydro & Janitorial)

Available Immediately

Term 5 - 10 years

### COMMENTS

- Lower level character space
- In the heart of eclectic Queen West community
- Space suited for office and retail uses
- Freight elevator



ASHLAR

a member of NAI Global

**ASHLAR URBAN REALTY INC.**  
Real Estate Brokerage

350 Bay Street, Suite 400  
Toronto, ON M5H 2S6  
T 416.205.9222 F 416.205.9228

[www.ashlarurban.com](http://www.ashlarurban.com)

**JEFF THOMAS**, Associate Vice President  
T 416.205.9222 ext 221  
[jthomas@ashlarurban.com](mailto:jthomas@ashlarurban.com)

**MICHAEL SCACE**, Associate Vice President  
T 416.205.9222 ext 222  
[mscace@ashlarurban.com](mailto:mscace@ashlarurban.com)



The statements contained in this document are based upon the information furnished by the principal and other sources, which we believe to be correct but can assume no responsibility for. This submission is made subject to prior sale, change in price or terms, or withdrawal without notice. Prospective purchasers or tenants should not construe this information as legal or tax advice. Legal counsel, accountants or other advisors should be consulted on matters related to this presentation. — Ashlar Urban Realty Inc.

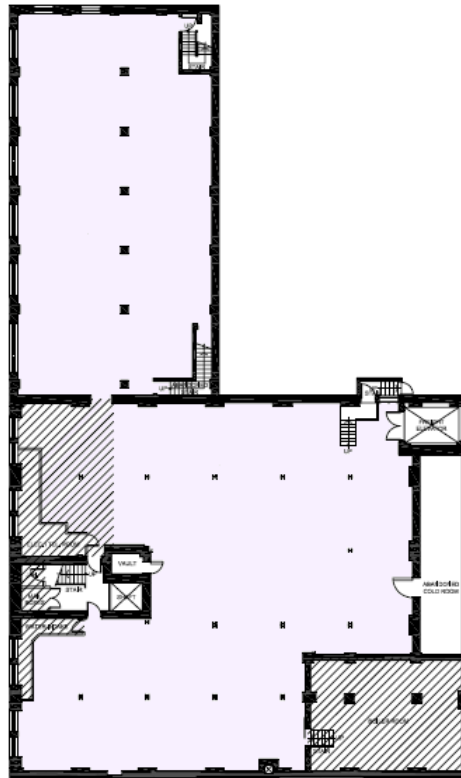
# 183 BATHURST STREET

Toronto, Ontario



## FLOOR PLANS

### Lower Level - 7,680 SF



## COMMENTS

- Double-height areas
- Concrete floors
- Exposed steel beams



ASHLAR

a member of **NAI**Global

**ASHLAR URBAN REALTY INC.**  
Real Estate Brokerage

350 Bay Street, Suite 400  
Toronto, ON M5H 2S6  
T 416.205.9222 F 416.205.9228

[www.ashlarurban.com](http://www.ashlarurban.com)

**JEFF THOMAS**, Associate Vice President  
T 416.205.9222 ext 221  
[jthomas@ashlarurban.com](mailto:jthomas@ashlarurban.com)

**MICHAEL SCACE**, Associate Vice President  
T 416.205.9222 ext 222  
[mscace@ashlarurban.com](mailto:mscace@ashlarurban.com)



The statements contained in this document are based upon the information furnished by the principal and other sources, which we believe to be correct but can assume no responsibility for. This submission is made subject to prior sale, change in price or terms, or withdrawal without notice. Prospective purchasers or tenants should not construe this information as legal or tax advice. Legal counsel, accountants or other advisors should be consulted on matters related to this presentation. — Ashlar Urban Realty Inc.

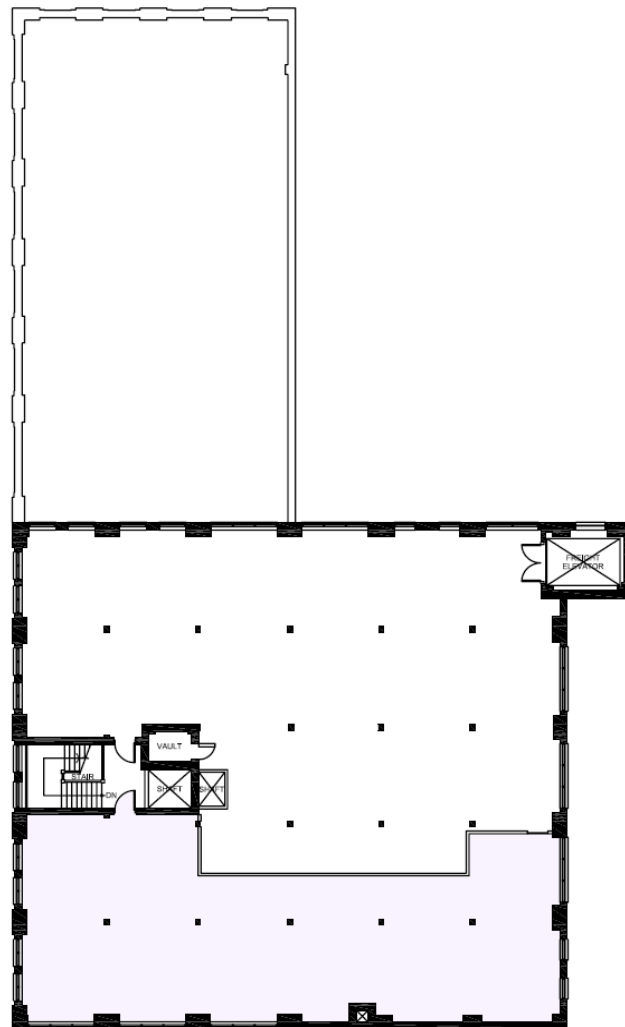
# 183 BATHURST STREET

Toronto, Ontario



## FLOOR PLANS

Suite 401 - 2,180 SF



ASHLAR

a member of **NAI**Global

**ASHLAR URBAN REALTY INC.**  
Real Estate Brokerage

350 Bay Street, Suite 400  
Toronto, ON M5H 2S6  
T 416.205.9222 F 416.205.9228

[www.ashlarurban.com](http://www.ashlarurban.com)

**JEFF THOMAS**, Associate Vice President  
T 416.205.9222 ext 221  
[jthomas@ashlarurban.com](mailto:jthomas@ashlarurban.com)

**MICHAEL SCACE**, Associate Vice President  
T 416.205.9222 ext 222  
[mscace@ashlarurban.com](mailto:mscace@ashlarurban.com)



The statements contained in this document are based upon the information furnished by the principal and other sources, which we believe to be correct but can assume no responsibility for. This submission is made subject to prior sale, change in price or terms, or withdrawal without notice. Prospective purchasers or tenants should not construe this information as legal or tax advice. Legal counsel, accountants or other advisors should be consulted on matters related to this presentation. — Ashlar Urban Realty Inc.