



330 BAY STREET

Toronto, Ontario



ASHLAR

a member of **NAI Global**

ASHLAR URBAN REALTY INC.
Real Estate Brokerage

350 Bay Street, Suite 400
Toronto, ON M5H 2S6
T 416.205.9222 F 416.205.9228

www.ashlarurban.com

JEFF THOMAS, Associate Vice President
T 416.205.9222 ext 221
jthomas@ashlarurban.com

MICHAEL SCACE, Associate Vice President
T 416.205.9222 ext 222
mscace@ashlarurban.com



The statements contained in this document are based upon the information furnished by the principal and other sources, which we believe to be correct but can assume no responsibility for. This submission is made subject to prior sale, change in price or terms, or withdrawal without notice. Prospective purchasers or tenants should not construe this information as legal or tax advice. Legal counsel, accountants or other advisors should be consulted on matters related to this presentation. — Ashlar Urban Realty Inc.

330 BAY STREET

Toronto, Ontario



DETAILS

Office Area

- Suite 405 - 3,282 SF Available now
- Suite 509 - 2,313 SF Available now
- Suite 602 - 1,440 SF Available now
- Suite 610 - 3,325 SF (Contiguous to 611)
- Suite 611 - 1,060 SF (Contiguous to 610)
- Suite 1111 - 779 SF Available now
- Suite 1502 - 849 SF Available now

Asking Net Rate Negotiable

T & O's \$19.40 PSF (Est. 2010)

Available Immediately

Term Negotiable



COMMENTS

- Great building amenities - corporate concierge and conference hall
- Located directly across from Bay-Adelaide Centre



ASHLAR

a member of NAI Global

ASHLAR URBAN REALTY INC.
Real Estate Brokerage

350 Bay Street, Suite 400
Toronto, ON M5H 2S6
T 416.205.9222 F 416.205.9228

www.ashlarurban.com

JEFF THOMAS, Associate Vice President
T 416.205.9222 ext 221
jthomas@ashlarurban.com

MICHAEL SCACE, Associate Vice President
T 416.205.9222 ext 222
mscace@ashlarurban.com



The statements contained in this document are based upon the information furnished by the principal and other sources, which we believe to be correct but can assume no responsibility for. This submission is made subject to prior sale, change in price or terms, or withdrawal without notice. Prospective purchasers or tenants should not construe this information as legal or tax advice. Legal counsel, accountants or other advisors should be consulted on matters related to this presentation. — Ashlar Urban Realty Inc.

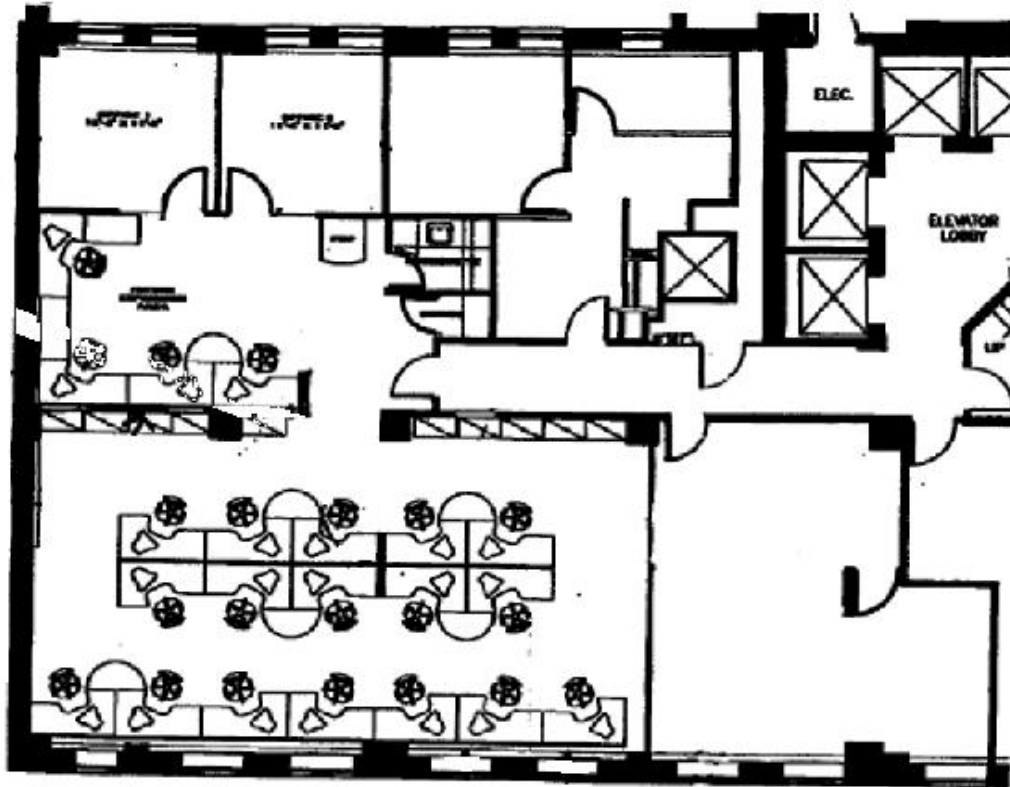
330 BAY STREET

Toronto, Ontario



FLOOR PLANS

Suite 405 - 3,282 SF



COMMENTS

- Perimeter offices/meeting rooms
- Kitchenette
- Open area



ASHLAR

a member of **NAI Global**

ASHLAR URBAN REALTY INC.
Real Estate Brokerage

350 Bay Street, Suite 400
Toronto, ON M5H 2S6
T 416.205.9222 F 416.205.9228

www.ashlarurban.com

JEFF THOMAS, Associate Vice President
T 416.205.9222 ext 221
jthomas@ashlarurban.com

MICHAEL SCACE, Associate Vice President
T 416.205.9222 ext 222
mscace@ashlarurban.com



The statements contained in this document are based upon the information furnished by the principal and other sources, which we believe to be correct but can assume no responsibility for. This submission is made subject to prior sale, change in price or terms, or withdrawal without notice. Prospective purchasers or tenants should not construe this information as legal or tax advice. Legal counsel, accountants or other advisors should be consulted on matters related to this presentation. — Ashlar Urban Realty Inc.

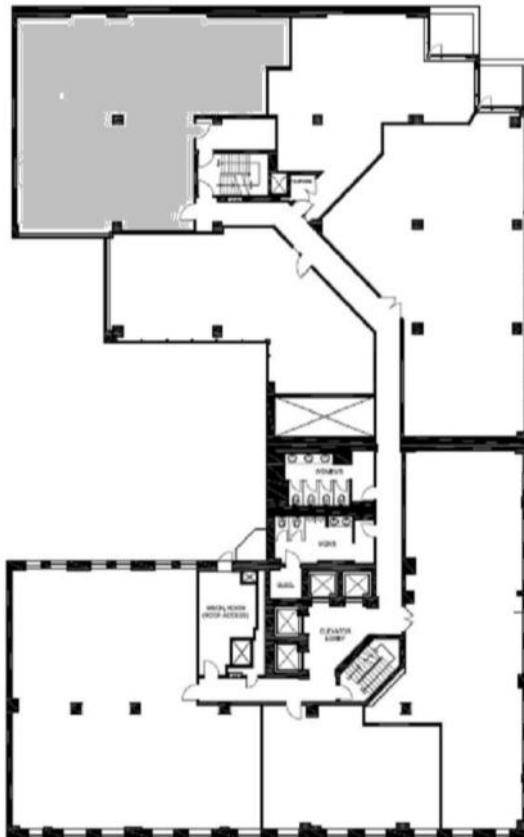
330 BAY STREET

Toronto, Ontario



FLOOR PLANS

Suite 509 - 2,313 SF



COMMENTS

- Open area
- Computer room



ASHLAR

a member of **NAI Global**

ASHLAR URBAN REALTY INC.
Real Estate Brokerage

350 Bay Street, Suite 400
Toronto, ON M5H 2S6
T 416.205.9222 F 416.205.9228

www.ashlarurban.com

JEFF THOMAS, Associate Vice President
T 416.205.9222 ext 221
jthomas@ashlarurban.com

MICHAEL SCACE, Associate Vice President
T 416.205.9222 ext 222
mscace@ashlarurban.com



The statements contained in this document are based upon the information furnished by the principal and other sources, which we believe to be correct but can assume no responsibility for. This submission is made subject to prior sale, change in price or terms, or withdrawal without notice. Prospective purchasers or tenants should not construe this information as legal or tax advice. Legal counsel, accountants or other advisors should be consulted on matters related to this presentation. — Ashlar Urban Realty Inc.

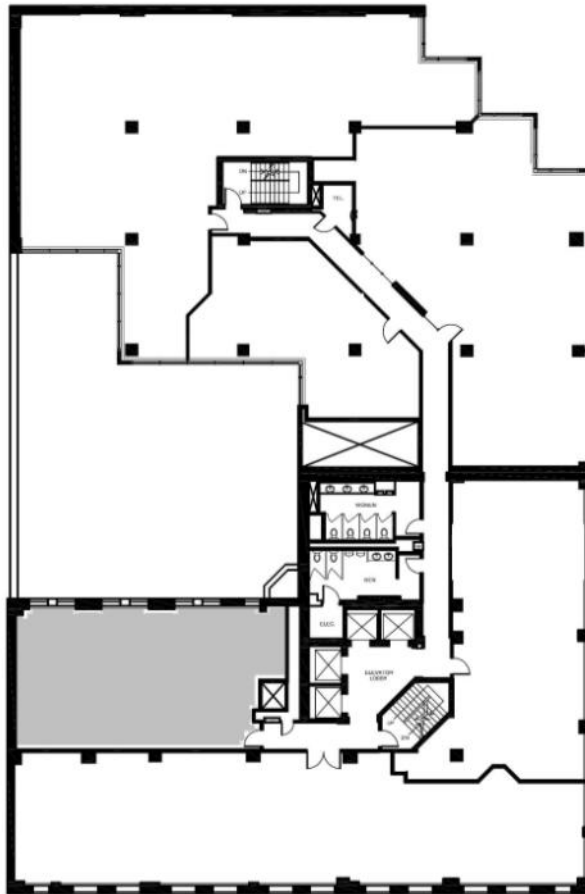
330 BAY STREET

Toronto, Ontario



FLOOR PLAN

Suite 602 - 1,440 SF



COMMENTS

- Base building condition



ASHLAR

a member of **NAI Global**

ASHLAR URBAN REALTY INC.
Real Estate Brokerage

350 Bay Street, Suite 400
Toronto, ON M5H 2S6
T 416.205.9222 F 416.205.9228

www.ashlarurban.com

JEFF THOMAS, Associate Vice President
T 416.205.9222 ext 221
jthomas@ashlarurban.com

MICHAEL SCACE, Associate Vice President
T 416.205.9222 ext 222
mscace@ashlarurban.com



The statements contained in this document are based upon the information furnished by the principal and other sources, which we believe to be correct but can assume no responsibility for. This submission is made subject to prior sale, change in price or terms, or withdrawal without notice. Prospective purchasers or tenants should not construe this information as legal or tax advice. Legal counsel, accountants or other advisors should be consulted on matters related to this presentation. — Ashlar Urban Realty Inc.

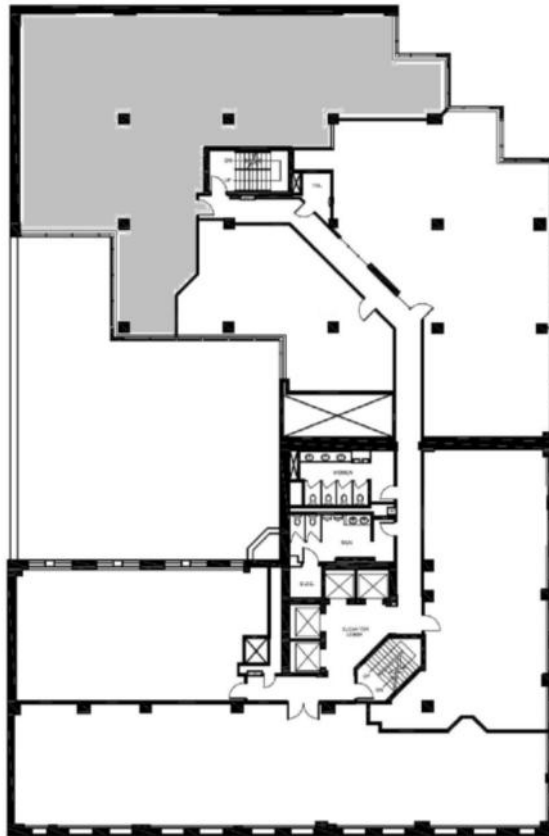
330 BAY STREET

Toronto, Ontario



FLOOR PLAN

Suite 610 - 3,325 SF
*Contiguous to Suite 611



COMMENTS

- Base building



ASHLAR

a member of **NAI Global**

ASHLAR URBAN REALTY INC.
Real Estate Brokerage

350 Bay Street, Suite 400
Toronto, ON M5H 2S6
T 416.205.9222 F 416.205.9228

www.ashlarurban.com

JEFF THOMAS, Associate Vice President
T 416.205.9222 ext 221
jthomas@ashlarurban.com

MICHAEL SCACE, Associate Vice President
T 416.205.9222 ext 222
mscace@ashlarurban.com



The statements contained in this document are based upon the information furnished by the principal and other sources, which we believe to be correct but can assume no responsibility for. This submission is made subject to prior sale, change in price or terms, or withdrawal without notice. Prospective purchasers or tenants should not construe this information as legal or tax advice. Legal counsel, accountants or other advisors should be consulted on matters related to this presentation. — Ashlar Urban Realty Inc.

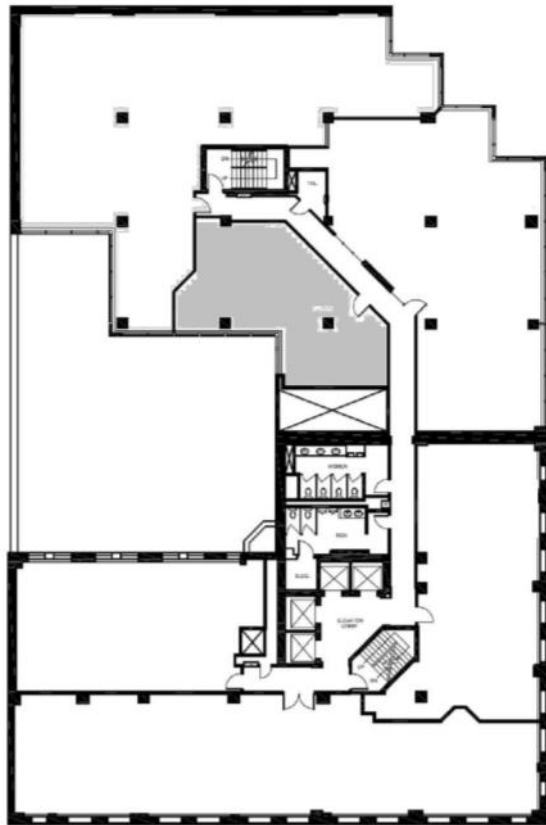
330 BAY STREET

Toronto, Ontario



FLOOR PLAN

Suite 611 - 1,060 SF
*Contiguous to Suite 610



COMMENTS

- 3 offices and open area



ASHLAR

a member of **NAI Global**

ASHLAR URBAN REALTY INC.
Real Estate Brokerage

350 Bay Street, Suite 400
Toronto, ON M5H 2S6
T 416.205.9222 F 416.205.9228

www.ashlarurban.com

JEFF THOMAS, Associate Vice President
T 416.205.9222 ext 221
jthomas@ashlarurban.com

MICHAEL SCACE, Associate Vice President
T 416.205.9222 ext 222
mscace@ashlarurban.com



The statements contained in this document are based upon the information furnished by the principal and other sources, which we believe to be correct but can assume no responsibility for. This submission is made subject to prior sale, change in price or terms, or withdrawal without notice. Prospective purchasers or tenants should not construe this information as legal or tax advice. Legal counsel, accountants or other advisors should be consulted on matters related to this presentation. — Ashlar Urban Realty Inc.

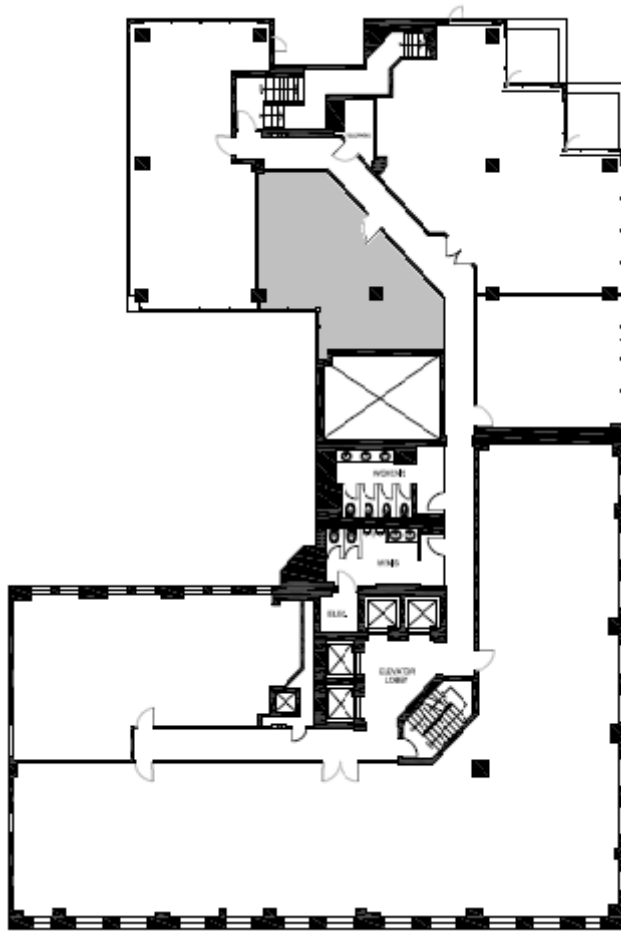
330 BAY STREET

Toronto, Ontario



FLOOR PLAN

Suite 1111 – 779 SF



ASHLAR

a member of **NAI Global**

ASHLAR URBAN REALTY INC.
Real Estate Brokerage

350 Bay Street, Suite 400
Toronto, ON M5H 2S6
T 416.205.9222 F 416.205.9228

www.ashlarurban.com

JEFF THOMAS, Associate Vice President
T 416.205.9222 ext 221
jthomas@ashlarurban.com

MICHAEL SCACE, Associate Vice President
T 416.205.9222 ext 222
mscace@ashlarurban.com



The statements contained in this document are based upon the information furnished by the principal and other sources, which we believe to be correct but can assume no responsibility for. This submission is made subject to prior sale, change in price or terms, or withdrawal without notice. Prospective purchasers or tenants should not construe this information as legal or tax advice. Legal counsel, accountants or other advisors should be consulted on matters related to this presentation. — Ashlar Urban Realty Inc.

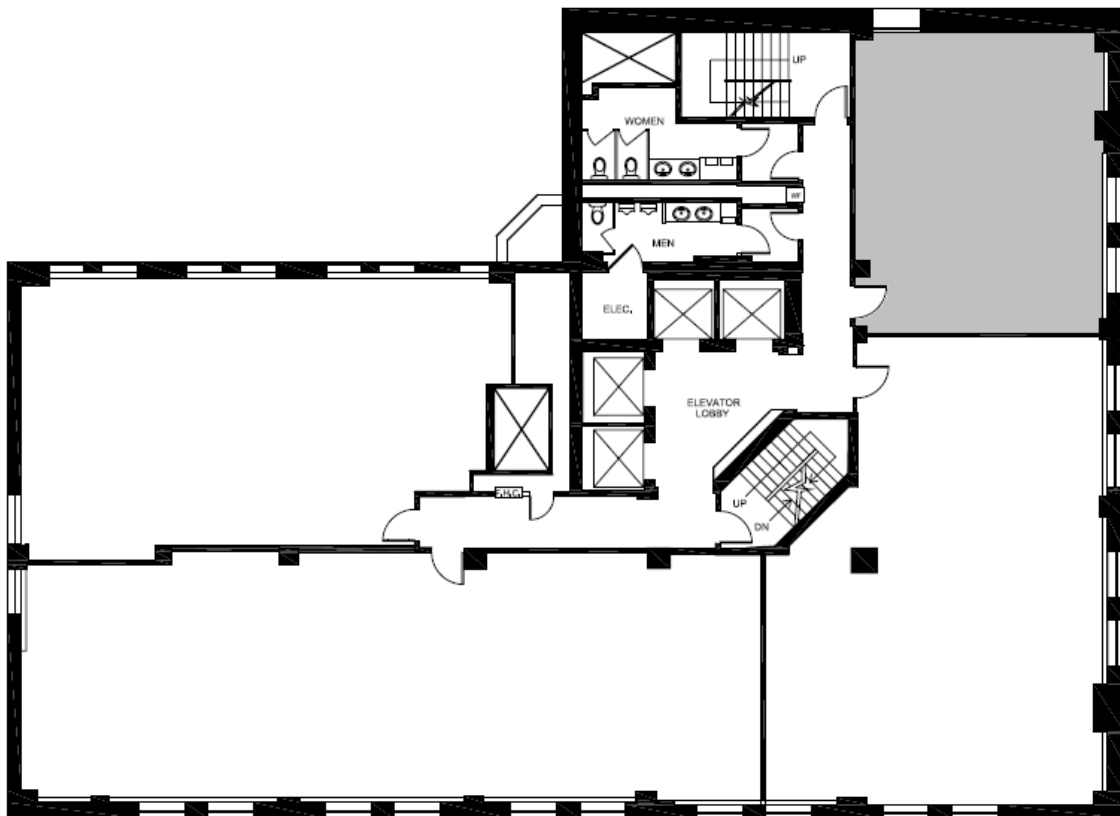
330 BAY STREET

Toronto, Ontario



FLOOR PLAN

Suite 1502– 849 SF



ASHLAR

a member of **NAI Global**

ASHLAR URBAN REALTY INC.
Real Estate Brokerage

350 Bay Street, Suite 400
Toronto, ON M5H 2S6
T 416.205.9222 F 416.205.9228

www.ashlarurban.com

JEFF THOMAS, Associate Vice President
T 416.205.9222 ext 221
jthomas@ashlarurban.com

MICHAEL SCACE, Associate Vice President
T 416.205.9222 ext 222
mscace@ashlarurban.com



The statements contained in this document are based upon the information furnished by the principal and other sources, which we believe to be correct but can assume no responsibility for. This submission is made subject to prior sale, change in price or terms, or withdrawal without notice. Prospective purchasers or tenants should not construe this information as legal or tax advice. Legal counsel, accountants or other advisors should be consulted on matters related to this presentation. — Ashlar Urban Realty Inc.