



# 360 BAY STREET

Toronto, Ontario



**ASHLAR**

a member of **NAI Global**

**ASHLAR URBAN REALTY INC.**  
Real Estate Brokerage

350 Bay Street, Suite 400  
Toronto, ON M5H 2S6  
T 416.205.9222 F 416.205.9228

[www.ashlarurban.com](http://www.ashlarurban.com)

**JEFF THOMAS**, Associate Vice President  
T 416.205.9222 ext 221  
[jthomas@ashlarurban.com](mailto:jthomas@ashlarurban.com)

**MICHAEL SCACE**, Associate Vice President  
T 416.205.9222 ext 222  
[mscace@ashlarurban.com](mailto:mscace@ashlarurban.com)



The statements contained in this document are based upon the information furnished by the principal and other sources, which we believe to be correct but can assume no responsibility for. This submission is made subject to prior sale, change in price or terms, or withdrawal without notice. Prospective purchasers or tenants should not construe this information as legal or tax advice. Legal counsel, accountants or other advisors should be consulted on matters related to this presentation. — Ashlar Urban Realty Inc.

# 360 BAY STREET

Toronto, Ontario



## DETAILS

### Office Area

- Suite 600 - 5,341 SF Available now
- Suite 1000 - 1,955 SF Available now

Asking Net Rate Negotiable

T & O's \$18.96 PSF (Est. 2010)

Term 5 - 10 years

## COMMENTS

- Outstanding Bay Street location
- Steps to the PATH System
- Located close to Bay/Adelaide Centre



**ASHLAR**  
a member of **NAI Global**

**ASHLAR URBAN REALTY INC.**  
Real Estate Brokerage

350 Bay Street, Suite 400  
Toronto, ON M5H 2S6  
T 416.205.9222 F 416.205.9228

[www.ashlarurban.com](http://www.ashlarurban.com)

**JEFF THOMAS**, Associate Vice President  
T 416.205.9222 ext 221  
[jthomas@ashlarurban.com](mailto:jthomas@ashlarurban.com)

**MICHAEL SCACE**, Associate Vice President  
T 416.205.9222 ext 222  
[mscace@ashlarurban.com](mailto:mscace@ashlarurban.com)



The statements contained in this document are based upon the information furnished by the principal and other sources, which we believe to be correct but can assume no responsibility for. This submission is made subject to prior sale, change in price or terms, or withdrawal without notice. Prospective purchasers or tenants should not construe this information as legal or tax advice. Legal counsel, accountants or other advisors should be consulted on matters related to this presentation. — Ashlar Urban Realty Inc.

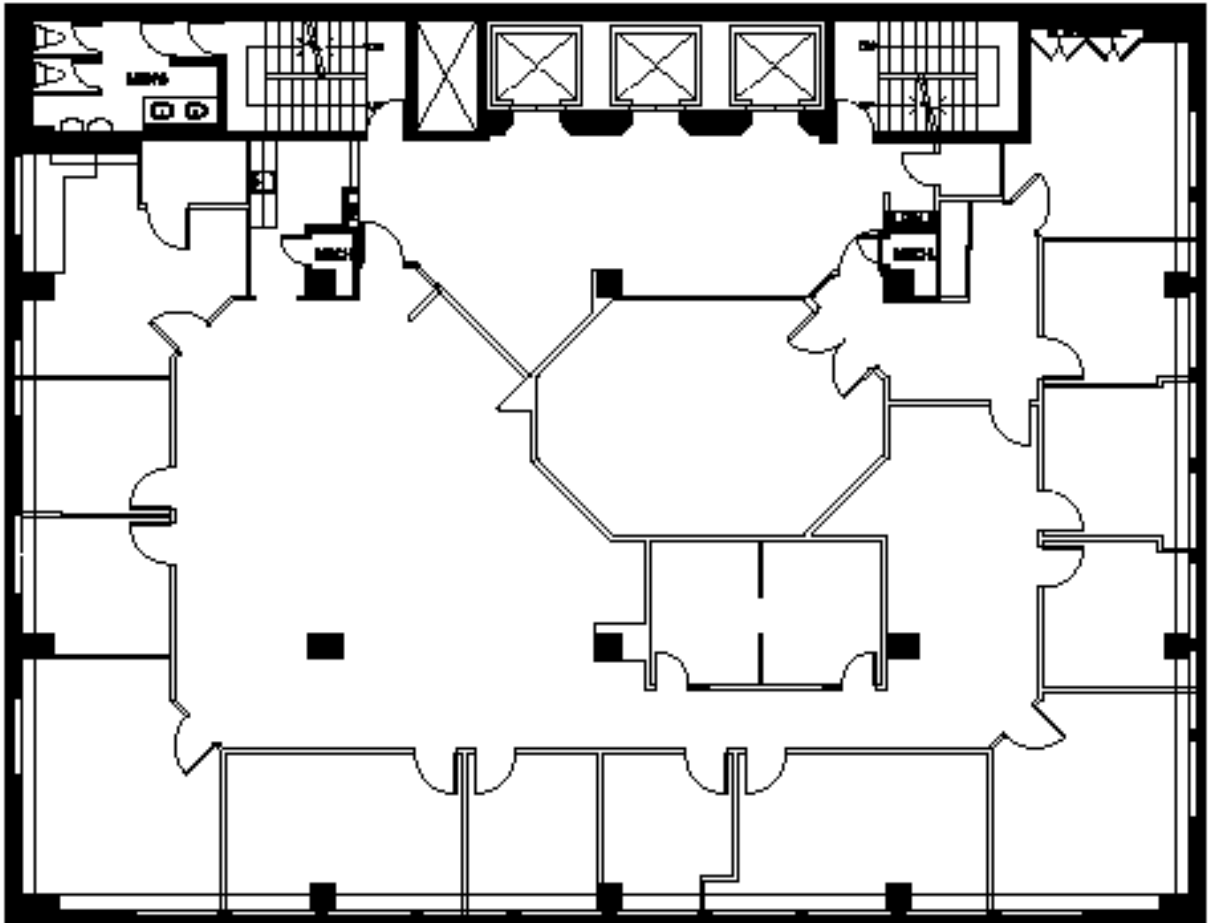
# 360 BAY STREET

Toronto, Ontario



## FLOOR PLANS

Suite 600 – 5,341 SF



**ASHLAR**

a member of **NAI Global**

**ASHLAR URBAN REALTY INC.**  
Real Estate Brokerage

350 Bay Street, Suite 400  
Toronto, ON M5H 2S6  
T 416.205.9222 F 416.205.9228

[www.ashlarurban.com](http://www.ashlarurban.com)

**JEFF THOMAS**, Associate Vice President  
T 416.205.9222 ext 221  
[jthomas@ashlarurban.com](mailto:jthomas@ashlarurban.com)

**MICHAEL SCACE**, Associate Vice President  
T 416.205.9222 ext 222  
[mscace@ashlarurban.com](mailto:mscace@ashlarurban.com)



The statements contained in this document are based upon the information furnished by the principal and other sources, which we believe to be correct but can assume no responsibility for. This submission is made subject to prior sale, change in price or terms, or withdrawal without notice. Prospective purchasers or tenants should not construe this information as legal or tax advice. Legal counsel, accountants or other advisors should be consulted on matters related to this presentation. — Ashlar Urban Realty Inc.

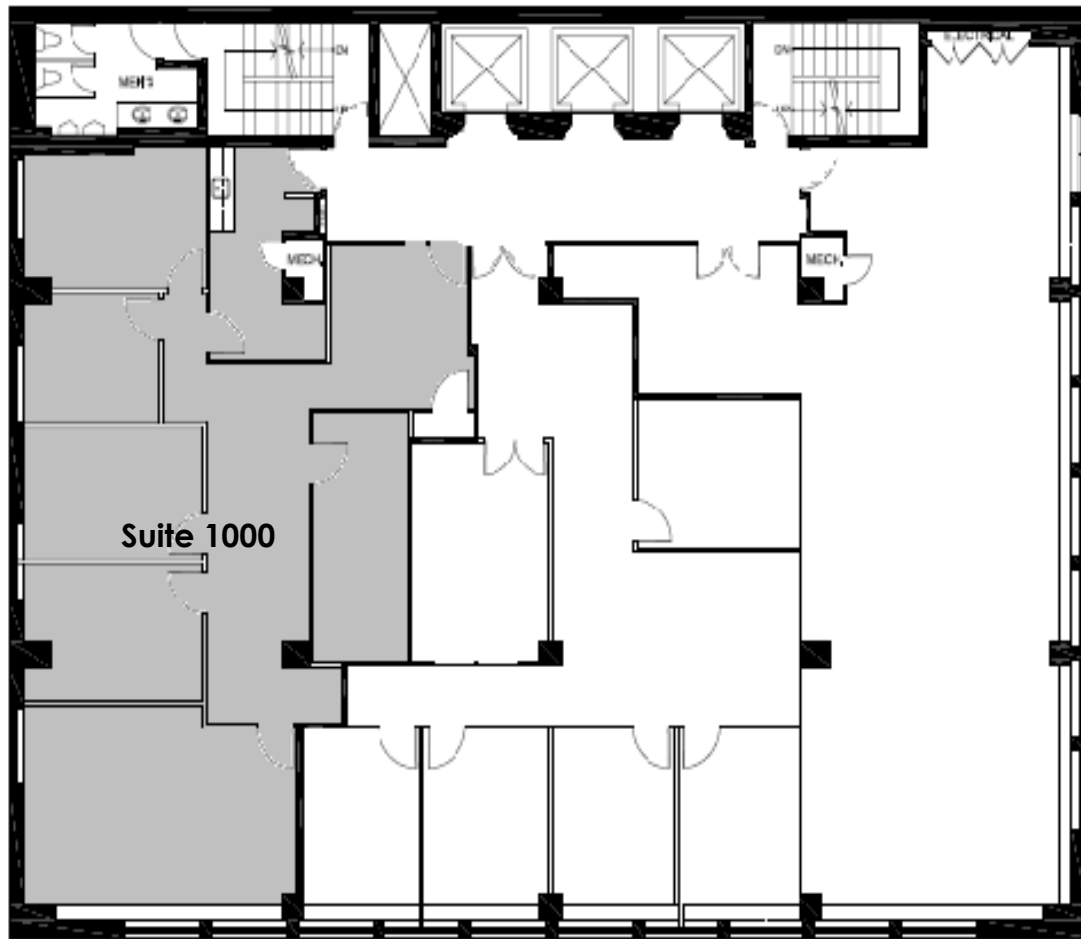
# 360 BAY STREET

Toronto, Ontario



## FLOOR PLANS

Suite 1000 – 1,955 SF



**ASHLAR**

a member of **NAI Global**

**ASHLAR URBAN REALTY INC.**  
Real Estate Brokerage

350 Bay Street, Suite 400  
Toronto, ON M5H 2S6  
T 416.205.9222 F 416.205.9228

[www.ashlarurban.com](http://www.ashlarurban.com)

**JEFF THOMAS**, Associate Vice President  
T 416.205.9222 ext 221  
[jthomas@ashlarurban.com](mailto:jthomas@ashlarurban.com)

**MICHAEL SCACE**, Associate Vice President  
T 416.205.9222 ext 222  
[mscace@ashlarurban.com](mailto:mscace@ashlarurban.com)



The statements contained in this document are based upon the information furnished by the principal and other sources, which we believe to be correct but can assume no responsibility for. This submission is made subject to prior sale, change in price or terms, or withdrawal without notice. Prospective purchasers or tenants should not construe this information as legal or tax advice. Legal counsel, accountants or other advisors should be consulted on matters related to this presentation. — Ashlar Urban Realty Inc.