

# 366 BAY STREET

Toronto, Ontario



**ASHLAR**

a member of **Ni Global**

**ASHLAR URBAN REALTY INC.**  
Real Estate Brokerage

350 Bay Street, Suite 400  
Toronto, ON M5H 2S6  
T 416.205.9222 F 416.205.9228

[www.ashlarurban.com](http://www.ashlarurban.com)

**JEFF THOMAS**, Associate Vice President  
T 416.205.9222 ext 221  
[jthomas@ashlarurban.com](mailto:jthomas@ashlarurban.com)

**MICHAEL SCACE**, Associate Vice President  
T 416.205.9222 ext 222  
[mscace@ashlarurban.com](mailto:mscace@ashlarurban.com)



The statements contained in this document are based upon the information furnished by the principal and other sources, which we believe to be correct but can assume no responsibility for. This submission is made subject to prior sale, change in price or terms, or withdrawal without notice. Prospective purchasers or tenants should not construe this information as legal or tax advice. Legal counsel, accountants or other advisors should be consulted on matters related to this presentation. — Ashlar Urban Realty Inc.

# 366 BAY STREET

Toronto, Ontario



## DETAILS

### Office Area

- Suite 301 - 1,370 SF Available Now
- Suite 600 - 3,092 SF Available Now
- Suite 800 - 3,090 SF Available Now
- Suite 1000 - 3,083 SF Available Now

Asking Net Rate      Negotiable

T & O's                      \$19.95 PSF (Est. 2010)

Term                              Negotiable

## COMMENTS

- Great full floor size - no columns
- Renovated lobby & common areas
- Boutique building on Bay Street
- Direct elevator exposure



ASHLAR

a member of **NAL** Global

**ASHLAR URBAN REALTY INC.**  
Real Estate Brokerage

350 Bay Street, Suite 400  
Toronto, ON M5H 2S6  
T 416.205.9222 F 416.205.9228

[www.ashlarurban.com](http://www.ashlarurban.com)

**JEFF THOMAS**, Associate Vice President  
T 416.205.9222 ext 221  
[jthomas@ashlarurban.com](mailto:jthomas@ashlarurban.com)

**MICHAEL SCACE**, Associate Vice President  
T 416.205.9222 ext 222  
[mscace@ashlarurban.com](mailto:mscace@ashlarurban.com)



The statements contained in this document are based upon the information furnished by the principal and other sources, which we believe to be correct but can assume no responsibility for. This submission is made subject to prior sale, change in price or terms, or withdrawal without notice. Prospective purchasers or tenants should not construe this information as legal or tax advice. Legal counsel, accountants or other advisors should be consulted on matters related to this presentation. — Ashlar Urban Realty Inc.

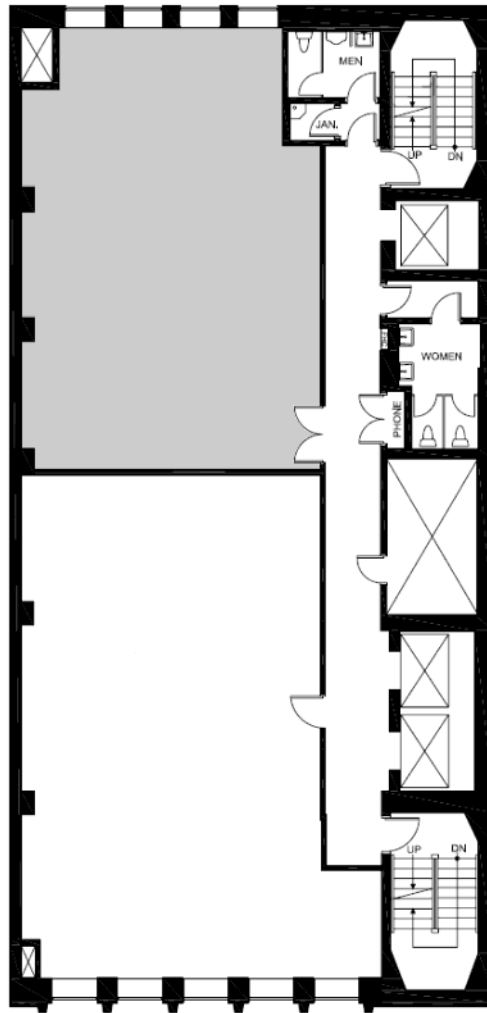
# 366 BAY STREET

Toronto, Ontario



## FLOOR PLANS

Suite 301 - 1,370 SF



ASHLAR

a member of **NAI**Global

**ASHLAR URBAN REALTY INC.**  
Real Estate Brokerage

350 Bay Street, Suite 400  
Toronto, ON M5H 2S6  
T 416.205.9222 F 416.205.9228

[www.ashlarurban.com](http://www.ashlarurban.com)

**JEFF THOMAS**, Associate Vice President  
T 416.205.9222 ext 221  
[jthomas@ashlarurban.com](mailto:jthomas@ashlarurban.com)

**MICHAEL SCACE**, Associate Vice President  
T 416.205.9222 ext 222  
[mscace@ashlarurban.com](mailto:mscace@ashlarurban.com)



The statements contained in this document are based upon the information furnished by the principal and other sources, which we believe to be correct but can assume no responsibility for. This submission is made subject to prior sale, change in price or terms, or withdrawal without notice. Prospective purchasers or tenants should not construe this information as legal or tax advice. Legal counsel, accountants or other advisors should be consulted on matters related to this presentation. — Ashlar Urban Realty Inc.

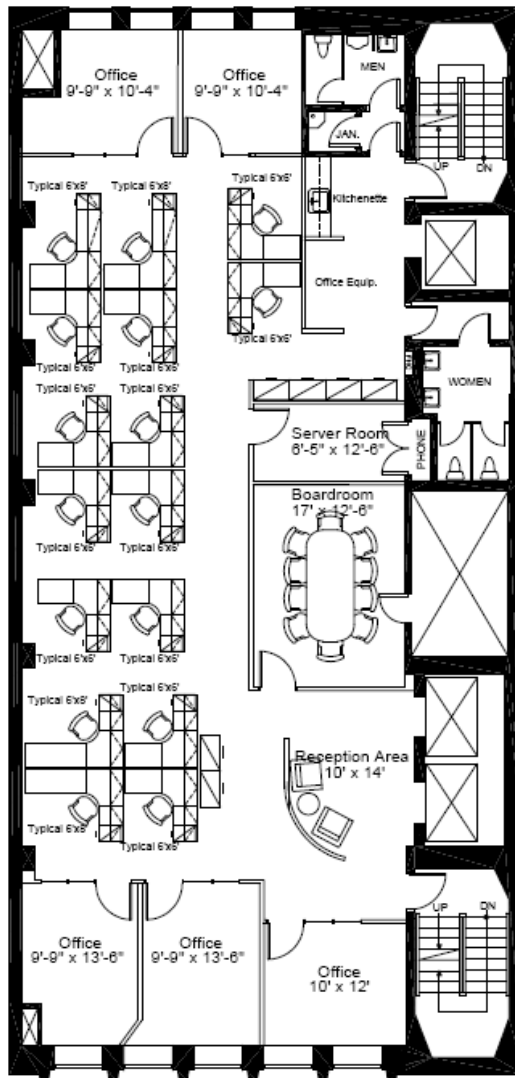
# 366 BAY STREET

Toronto, Ontario



## FLOOR PLANS

### Suite 600 - 3,092 SF



ASHLAR

a member of **NAI** Global

**ASHLAR URBAN REALTY INC.**  
Real Estate Brokerage

350 Bay Street, Suite 400  
Toronto, ON M5H 2S6  
T 416.205.9222 F 416.205.9228

[www.ashlarurban.com](http://www.ashlarurban.com)

**JEFF THOMAS**, Associate Vice President  
T 416.205.9222 ext 221  
[jthomas@ashlarurban.com](mailto:jthomas@ashlarurban.com)

**MICHAEL SCACE**, Associate Vice President  
T 416.205.9222 ext 222  
[mscace@ashlarurban.com](mailto:mscace@ashlarurban.com)



The statements contained in this document are based upon the information furnished by the principal and other sources, which we believe to be correct but can assume no responsibility for. This submission is made subject to prior sale, change in price or terms, or withdrawal without notice. Prospective purchasers or tenants should not construe this information as legal or tax advice. Legal counsel, accountants or other advisors should be consulted on matters related to this presentation. — Ashlar Urban Realty Inc.

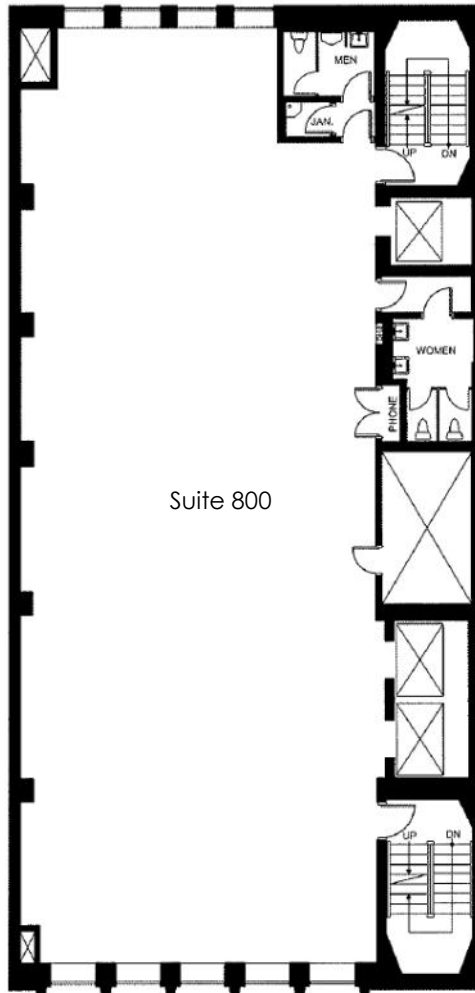
# 366 BAY STREET

Toronto, Ontario



## FLOOR PLANS

### Suite 800 - 3,090 SF



## COMMENTS

- Open floor with no columns
- Brand new T-bar ceilings and lighting in place



ASHLAR

a member of **NAI Global**

**ASHLAR URBAN REALTY INC.**  
Real Estate Brokerage

350 Bay Street, Suite 400  
Toronto, ON M5H 2S6  
T 416.205.9222 F 416.205.9228

[www.ashlarurban.com](http://www.ashlarurban.com)

**JEFF THOMAS**, Associate Vice President  
T 416.205.9222 ext 221  
[jthomas@ashlarurban.com](mailto:jthomas@ashlarurban.com)

**MICHAEL SCACE**, Associate Vice President  
T 416.205.9222 ext 222  
[mscace@ashlarurban.com](mailto:mscace@ashlarurban.com)



The statements contained in this document are based upon the information furnished by the principal and other sources, which we believe to be correct but can assume no responsibility for. This submission is made subject to prior sale, change in price or terms, or withdrawal without notice. Prospective purchasers or tenants should not construe this information as legal or tax advice. Legal counsel, accountants or other advisors should be consulted on matters related to this presentation. — Ashlar Urban Realty Inc.

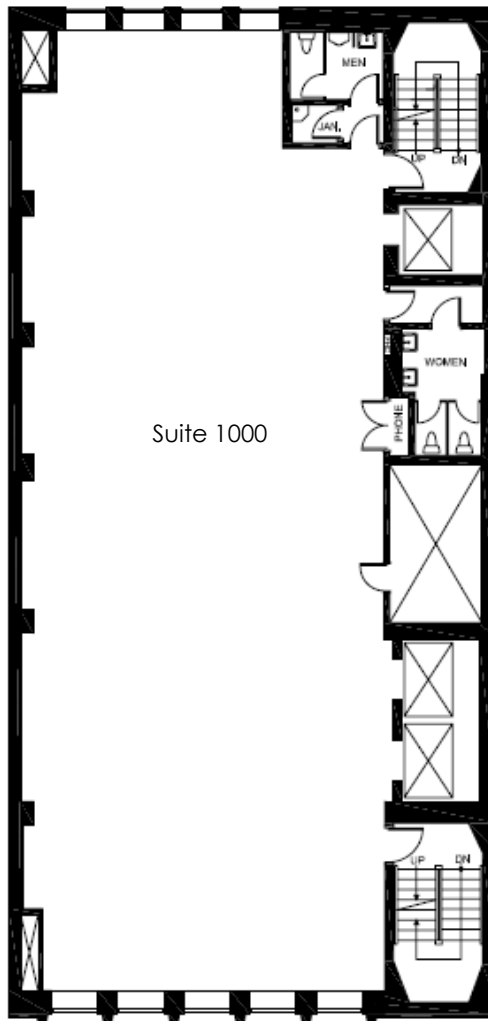
# 366 BAY STREET

Toronto, Ontario



## FLOOR PLANS

Suite 1000 - 3,083 SF



ASHLAR

a member of **NAI** Global

**ASHLAR URBAN REALTY INC.**  
Real Estate Brokerage

350 Bay Street, Suite 400  
Toronto, ON M5H 2S6  
T 416.205.9222 F 416.205.9228

[www.ashlarurban.com](http://www.ashlarurban.com)

**JEFF THOMAS**, Associate Vice President  
T 416.205.9222 ext 221  
[jthomas@ashlarurban.com](mailto:jthomas@ashlarurban.com)

**MICHAEL SCACE**, Associate Vice President  
T 416.205.9222 ext 222  
[mscace@ashlarurban.com](mailto:mscace@ashlarurban.com)



The statements contained in this document are based upon the information furnished by the principal and other sources, which we believe to be correct but can assume no responsibility for. This submission is made subject to prior sale, change in price or terms, or withdrawal without notice. Prospective purchasers or tenants should not construe this information as legal or tax advice. Legal counsel, accountants or other advisors should be consulted on matters related to this presentation. — Ashlar Urban Realty Inc.