

60 ADELAIDE STREET EAST

Toronto, Ontario



ASHLAR

a member of **NAI Global**

ASHLAR URBAN REALTY INC.
Real Estate Brokerage

350 Bay Street, Suite 400
Toronto, ON M5H 2S6
T 416.205.9222 F 416.205.9228

www.ashlarurban.com

JEFF THOMAS, Associate Vice President
T 416.205.9222 ext 221
jthomas@ashlarurban.com

MICHAEL SCACE, Associate Vice President
T 416.205.9222 ext 222
mscace@ashlarurban.com



The statements contained in this document are based upon the information furnished by the principal and other sources, which we believe to be correct but can assume no responsibility for. This submission is made subject to prior sale, change in price or terms, or withdrawal without notice. Prospective purchasers or tenants should not construe this information as legal or tax advice. Legal counsel, accountants or other advisors should be consulted on matters related to this presentation. — Ashlar Urban Realty Inc.

60 ADELAIDE STREET EAST

Toronto, Ontario



DETAILS

Office Area

- Suite 700 - 8,497 SF Available Now
- Suite 1200 - 8,447 SF Available Now

Asking Net Rate Negotiable

T & O's \$17.90 PSF (Est. 2010)

Term Negotiable

COMMENTS

- Existing improvements in place
- Direct elevator exposure



ASHLAR

a member of **NAI** Global

ASHLAR URBAN REALTY INC.
Real Estate Brokerage

350 Bay Street, Suite 400
Toronto, ON M5H 2S6
T 416.205.9222 F 416.205.9228

www.ashlarurban.com

JEFF THOMAS, Associate Vice President
T 416.205.9222 ext 221
jthomas@ashlarurban.com

MICHAEL SCACE, Associate Vice President
T 416.205.9222 ext 222
mscace@ashlarurban.com



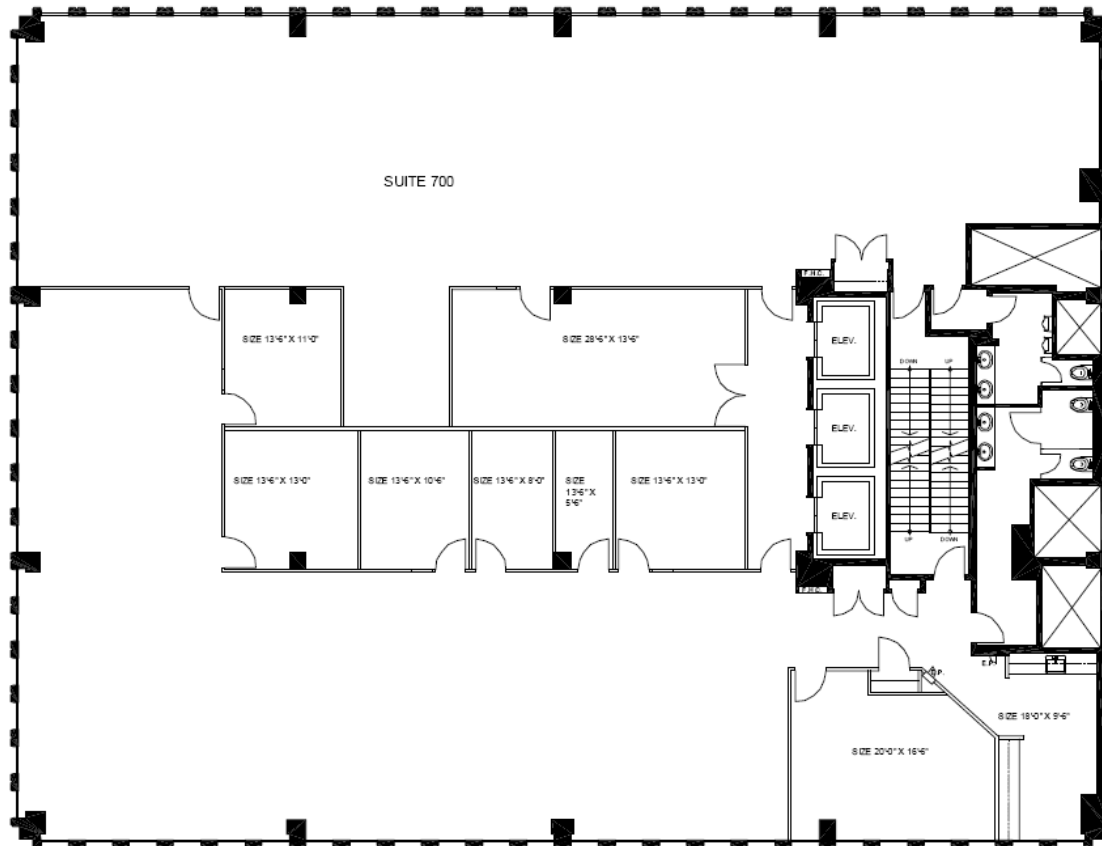
60 ADELAIDE STREET EAST

Toronto, Ontario



FLOOR PLANS

Suite 700 - 8,497 SF



COMMENTS

- Full floor
- Elevator exposure
- Some existing improvements in place



ASHLAR

a member of NAI Global

ASHLAR URBAN REALTY INC.
Real Estate Brokerage

350 Bay Street, Suite 400
Toronto, ON M5H 2S6
T 416.205.9222 F 416.205.9228

www.ashlarurban.com

JEFF THOMAS, Associate Vice President
T 416.205.9222 ext 221
jthomas@ashlarurban.com

MICHAEL SCACE, Associate Vice President
T 416.205.9222 ext 222
mscace@ashlarurban.com



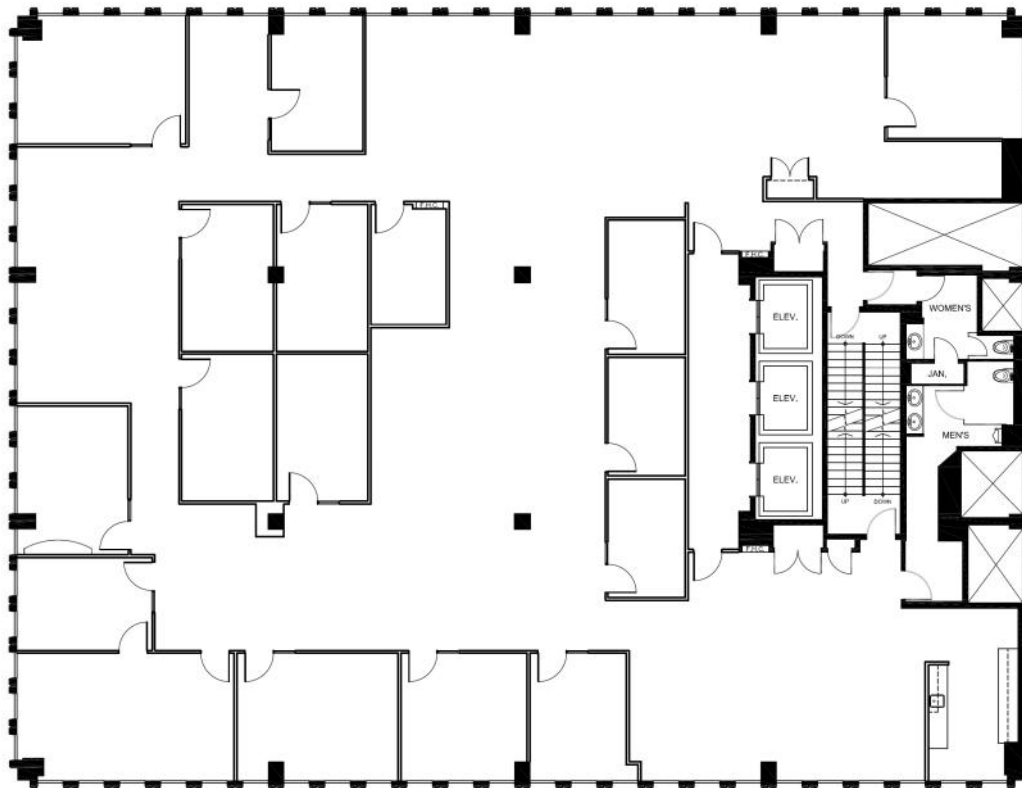
60 ADELAIDE STREET EAST

Toronto, Ontario



FLOOR PLANS

Suite 1200 - 8,447 SF



COMMENTS

- Full floor
- Mix of office and open space
- Elevator exposure
- Pass card locked suite



ASHLAR

a member of **NAI** Global

ASHLAR URBAN REALTY INC.
Real Estate Brokerage

350 Bay Street, Suite 400
Toronto, ON M5H 2S6
T 416.205.9222 F 416.205.9228

www.ashlarurban.com

JEFF THOMAS, Associate Vice President
T 416.205.9222 ext 221
jthomas@ashlarurban.com

MICHAEL SCACE, Associate Vice President
T 416.205.9222 ext 222
mscace@ashlarurban.com

